

*Estimates



8,000m² concrete

That's enough to fill 3.2 Olympic swimming pools

7 concrete slabs

Includes basement, ground floor,
levels 1, 2, 3, 4 and 5

4 concrete pours

Or approx. 190 truck movements per slab.
28 days to reach design strength



1 tower crane

Named Wama-rra meaning build in Wiradjuri.
Can lift up to 24 tonnes



447 columns

In the building



90 building workers

On average working on site each day. This figure
will vary during construction

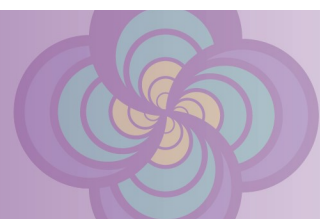


54,000m² of painting



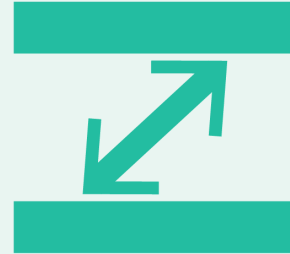
99 foundations drilled

Up to 20m deep into the ground





5,000m²
Metal roof sheeting



3 link ways to hospital

On ground floor, levels 1 and 4

Combined entrance

New foyer structure for hospital and new
Ambulatory Care Building

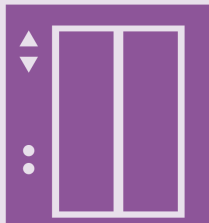


10,400m²
Metal and aluminium cladding

2,200m²
Windows and glazing



3 precast stairwells



1 precast lift core

Housing 4 lifts



21,000m²
Floor space plus underground car parking

