



Tower Crane

How tall is it?

Known as a JASO Flat Top Tower Crane or J420, it is 48.9-metres tall from its base. This is approximately 10-metres higher than the Wagga Wagga Base Hospital building.

How much can it lift?

The crane can lift up to 24-tonne.

How far can the crane reach?

The crane's horizontal jib or boom can reach up to 65-metres.

What will it be lifting on the Wagga Wagga Health Service campus?

The tower crane will be used to lift and move materials, plant and equipment on and off the new multi-storey Stage 3 building. This includes the lifting of formwork, reinforcement and scaffolding onto the new building structure as well as the removal of excess materials and waste to the ground.

When will the crane be in use?

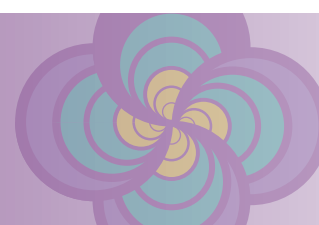
The crane will be normally operating between 7am and 6pm Monday to Friday and 7am to 5.30pm on Saturday. The time may vary depending on the weather and construction demands.

How long will the tower crane be in Wagga Wagga?

The tower crane will be a feature of the city's skyline until early 2020.

Who can operate the tower crane?

A crane operator must obtain a high risk work licence in NSW. The operator is supported by two 'dogman' who direct the crane driver via 2-way radio communication. The first dogman is positioned at the initial lifting location to secure the load to the hook of the crane and direct the item into the air. The second dogman is located at the final laydown location to direct the item into position and release the item from the crane hook.



How does the crane operator get to the top?

The operator climbs the tower mount to reach the crane's cabin.

How did the tower crane get to Wagga Wagga?

The crane was transported to Wagga Wagga in sections on heavy vehicles from Titan Cranes depot in Hoppers Crossing, Melbourne.

The crane was assembled and commissioned on the Stage 3 construction site on the Wagga Wagga Health Service campus over two days using a mobile crane.

Prior to the crane's arrival on the construction site, a concrete crane base with footings was prepared.

The crane was last used in the construction of an apartment building in Melbourne.

What is the Wagga Wagga Health Service Redevelopment?

The [\\$431 million Redevelopment](#) is being delivered in three stages. Stage 1 delivered a new Mental Health Building and Stage 2 delivered a new Acute Services Building. Stages 1 and 2 were completed by late 2017.

Stage 3 will deliver a 6-storey [Ambulatory Care Building](#), including a rooftop plant room, all above an undercroft parking level. Stage 3 will bring sub-acute, ambulatory, community and primary health services onto a single site on the Wagga Wagga Health Service campus.

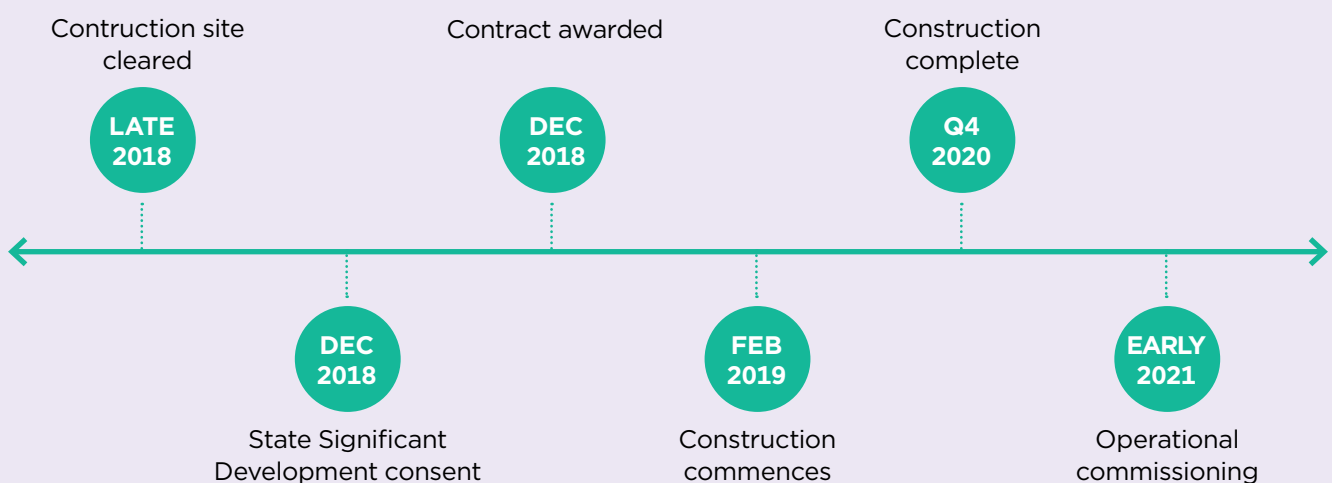
Stage 3 also includes the relocation of [BreastScreen NSW](#) into a leased site in Berry Street in Wagga Wagga's central business district.

A Stage 3 Anticipated Project Timeline can be downloaded [here](#).

Who is involved in the WWHS Redevelopment Stage 3?

Health Infrastructure (HI) is working with MLHD to deliver Stage 3. CPB Contractors Pty Ltd commenced construction work for the new Stage 3 building early 2019 after being awarded the contract at the end of 2018.


Timeline for Stage 3 building



FOR MORE INFORMATION:

 wwhsredev.health.nsw.gov.au

 WWHSR3@health.nsw.gov.au

 (02) 5943 1370

