

Training on construction site

The company behind the construction of the new multi-storey Ambulatory Care Building, CPB Contractors, has joined forces with a number of organisations to empower young unemployed people to break the cycle of joblessness.

The Pre-Apprenticeship Construction Skill Set, a 7 week course delivered by TAFE NSW Wagga Wagga, is the result of a partnership between CPB, Training Services NSW, ATEL, the Multicultural Council of Wagga Wagga, the Department of Communities and Justice, and TAFE NSW.

The 12 course participants completed two weeks' work placement at the Wagga Wagga Health Service (WWHS) Redevelopment Stage 3 construction site and a number impressed employers so much, they were immediately offered employment.

The course targeted unemployed locals under 25 years of age and those from disadvantaged backgrounds.

The NSW Government is investing \$431 million in the WWHS Redevelopment which is in its third and final stage.



**The Redevelopment Stage 3 Project Team
wishes you a very safe and happy
Christmas and New Year!**




Photo: Brandon Traynor (left) and Darnell Johnson, both 22, have secured apprenticeships on the Stage 3 construction site. Photo courtesy of Daily Advertiser.

Key activities for Stage 3 building

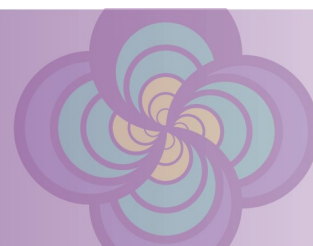
- A review of sample fixtures and fittings from taps to toilet seats underway with stakeholders.
- Structure of the building almost complete, with 'topping out' expected in Q1 2020.
- The fitout of building services such as electricity and data cables has commenced on the basement and lower levels.
- Works for the internal walls have commenced and façade works are expected to start in late December 2019.

FOR MORE INFORMATION:

 (02) 5943 1370

 wwhsredev.health.nsw.gov.au

 WWHSR3@health.nsw.gov.au



What I'm looking forward to...

As the Senior Dentist for the Wagga Wagga Oral Health Service, **Dr Kathleen Matthews** (right) is the manager and clinical lead for 30 staff onsite at Wagga Wagga Base Hospital and within community based clinics in Tumut, Tumbarumba, Young, Junee and Cootamundra.

What are you looking forward to most in the new Stage 3 building? Being part of a 'bigger' health picture and working with other health professionals to improve the health of the community. It will be great to have neighbours to talk with and work together on collaborative holistic health care delivery. I'm on record as saying that if eyes are the window to your soul then maybe your mouth is a snapshot of your health and well-being – poor oral health is an indicator of so many things including social disadvantage. Decay and gum disease are the most common chronic diseases across the population however access to dental services is an ongoing issue for about 20 per cent of the population.

Where will you be located in the new building? Oral Health Services will be located on level 2. It's a corner suite on the Docker/Edward St end of the building – so a room with a view! We will increase to an 8 dental surgery clinic and continue offer both child and adult services to eligible people within the MLHD population.

How will the new building help you enhance patient care? Patient care will firstly be enhanced by increasing our capacity to deliver dental services. Mostly the existing 6 dental chairs and associated special equipment will be transferred however we will have some new equipment and a purpose-built surgery for our specialist services that enhances dental service access for patients with special needs.



We are in the planning stages of delivering extra specialist oral surgery services and developing some 'tele-dentistry' pathways for other dental specialities.

We're hoping as a team we can contribute to the new collaborative working culture within the building and develop some 'out-reach' models of care with other teams inside the building and within the community – contributing to the 'big picture' that the new 'big building' represents.

**Photo courtesy of Daily Advertiser*

Thank-you for completing the Wagga Wagga Base Hospital's retail survey!

It's open until 18 December 2019


Staff & volunteers:

<https://www.surveymonkey.com/r/QQSJV37>

Patients & visitors:

<https://www.surveymonkey.com/r/QQVV6VK>

FOR MORE INFORMATION:

 (02) 5943 1370

 wwhsredev.health.nsw.gov.au

 WWHSR3@health.nsw.gov.au

